

# UNISON



Published by the UU Congregation of Frederick, MD ([www.frederickuu.org](http://www.frederickuu.org)) ◇ **March 2013**

*A Welcoming Congregation*

## FELLOWSHIP DINNER

**SATURDAY, MARCH 9, 5:30 p.m.**

Chili selections, including vegetarian;  
salads, corn bread, cake,  
and beverages. (BYOB)

**ENTERTAINMENT! FOOD! FUN! and FELLOWSHIP!**

Everything Free, Childcare Provided

**RSVP attendance and child care by MARCH 6**

301.473.7680 or [office@frederickuu.org](mailto:office@frederickuu.org)

*Sponsored by Stewardship*

### *Sustaining The Light!*

Pledge cards will be arriving the last week of February. Our goal is \$300,000 in pledges this year. Our building is in its 10th year and is in need of some repairs and maintenance, in addition to the normal operating expenses, including a paint job and a new air conditioning unit.

We are requesting all members to give as generously as they are able. Together we are making a real difference.

~~Roger Smith, Stewardship Chair  
<[r0g3ra5m1thdc@comcast.net](mailto:r0g3ra5m1thdc@comcast.net)>

### **ADULT SPIRITUAL ENRICHMENT**

**is delighted to bring  
back to the Frederick,  
MD region the Abbot  
Bhante Sujatha.**

**Bhante is entertaining,  
accessible and  
uplifting.**



**Practicing Peace, with  
Bhante Sujatha,  
Saturday, March 2,  
2013, 2:00 – 5:00 PM**

Bhante is offering an opportunity for Q and A as well as meditation instruction and practice. This is a good opportunity to explore how we can take the practice of peace out into our daily lives. This will be the fourth workshop that Bhante has offered at UUCF.

Buddhist teachers rely on “dana” for their work. Donations to Bhante’s work will be gratefully accepted.



## CARL'S COLUMN

Rev. Carl Gregg

Thank you to the approximately thirty members and friends of UUCF who were able to return on Sunday evening, February 10 for a discussion of Michelle Alexander's book *The New Jim Crow: Mass Incarceration in the Age of Colorblindness*. I also heard from many of you that wanted to attend, but were unable to for various reasons. In the future, I will strongly consider having such events immediately after the morning service, especially when the sermon is on a related theme. But in this case scheduling the evening session allowed three members of the local NAACP to attend.

I have sent a follow-up email to the President of the local chapter of the NAACP to continue to explore how we can partner together in the struggle against *The New Jim Crow*. I am also in the process of reading *The Arc of the Universe Is Long: Unitarian Universalists, Anti-Racism, and the Journey from Calgary*, which recounts the recent history of the Unitarian Universalist Association's

efforts to become a more anti-racist, anti-oppressive, multicultural movement. The book covers 14 years from the passage of the racial and cultural diversity resolution at the General Assembly in Calgary, Canada in 1992 to General Assembly 2006. I hope to learn from the success and failures of the past to inform our work at UUCF. Both of these are small steps on a long, but vital, journey toward wholeness.

Relatedly, the theme of the 2013 **District Assembly** of the JPD (Joseph Priestley District of the Unitarian Universalist Association, of which UUCF is a part) is "Expanding Our Ministries, Building Our Future: Growing the Multicultural, Multigenerational Congregation." I plan to attend, and invite you to consider attending as well if you can. There will be many valuable workshops and opportunities to learn from the best practices of other UU congregations. The conference will be in Wilmington, DE, **Friday-Saturday, April 12-13**. If you do plan to attend, please let me know. More information is available at <http://www.jpduua.org/news-and-notes/register-2013-jpd-assembly>.

I would also invite you to consider joining me at this year's annual **Unitarian Universalist Association**

**General Assembly in Louisville, KY, June 19-23** (see <http://www.uua.org/ga/>). The 2013 Public Witness event at General Assembly will focus on Environmental Justice. Wendell Berry will participate. If cost is a prohibitive factor, please consider the cost-saving ideas on this website: <http://tipsheet.blogs.uua.org/resources/ga-deadlines-near-for-financial-aid-certification/>.

Finally, my current inclination after talking with many different individuals and groups at UUCF over the past few months is to *not* switch to an earlier Sunday morning schedule in the summer as has been our custom. Families with young children, commuters who do not live close to UUCF, and people heavily invested in our diverse 10:00 a.m. programming most strongly favor staying at an 11:00 a.m. worship schedule year round. I welcome further insights or suggestions on this matter, but if you do have a strong objection, please let me know ASAP.

Thank you all for your ongoing support of all our missions and ministries at UUCF.

Peace to you,

Carl

## PRESIDENT'S CORNER



Karen Russell

<board@frederickuu.org>

I am excited about our upcoming Congregation Dinner and our Pledge Drive. I hope you are too.

We have accomplished so much lately and I know we will fulfill our monetary goal, reflected in the theme of the drive:

**"Sustaining the Light!"**

Let's keep going and growing in the future.

## New Members, Welcome

A special reason to cheer this St. Patrick's Day is the addition of new members to our congregation. We hope to get to know you better and especially invite you to our dinner on March 9.

JAKKI MACFADYEN  
ROBERT MACFADYEN  
TREVOR COMBS  
KIRSTEN BAIER  
DAVE LUFKIN  
LINDA LUFKIN

JENNIFER KNOWLES  
BEN PEGLER  
DAVE STINE  
CONNIE BAKER  
LISA SOLOMON



# PROGRAMS AT UUCF

## Sunday Services

**March 3:** Look and See! Why Is There Something Instead of Nothing? the Rev. Dr. Carl Gregg

**March 10:** *Conversation on Reducing Gun Violence*, the Rev. Dr. Carl Gregg

**March 17:** *Commitment Sunday*, the Rev. Dr. Carl Gregg

**March 24:** *Youth Sunday*, Lora Powell-Haney, Director of Religious Education

**March 31:** *The Parable of the Resurrection*, the Rev. Dr. Carl Gregg

## Friendly Forum

**March 3** - Solitary Confinement, (Linda Gustitus, president, National Religious Campaign Against Torture)

**March 10** - Who Stole the American Dream?, by Hedrick Smith (Dick Menzer)

**March 17** - Roe v. Wade, (Rev. Mike Morse)

**March 24** - Death with Dignity Act as passed by Oregon in 1994 and as proposed for Maryland, (Catherine Weber, former chair of Social Work Legislative Council, which lobbied in Annapolis)

**March 31** - Easter Sunday (no forum)

**March 3**, Sam+ Friends youth art show, reception on Sunday,

**March 24**, High school youth lead worship

**March 31**, Easter Egg Hunt following worship; more details will appear in weekly announcements. We're gonna need more eggs!

**Summer?** Yes, summer. Be sure to include UUCF in your summer plans! We have children's and youth religious education on Sundays throughout the summer, and are planning a family Evening Camp for late July. Won't you be part of the fun? Training, support and lesson plans are provided for summer RE teaching and assisting. A planning team and volunteers for food set-up and activity leaders are needed for Evening Camp. Contact DRE Lora Powell-Haney to volunteer!

## RE World



## ADULT SPIRITUAL ENRICHMENT

### NEW OFFERINGS:

- **Philosophical Journeys: An Introduction to Philosophy.** Presenter: Gordon Ziniewicz, Sundays, March 24, April 14, 28, May 12, 26, and June ? (6 sessions), 12:30 - 2:30 PM. *Due to the important congregational discussion on gun violence, this class will now begin on March 24.*

- **Reproductive Justice: Expanding our Social Justice Calling.** the Rev. Dr. Carl Gregg, Tuesdays, April 9 - May 14, 7:00 - 8:30 PM (6 sessions)l. Child care available.

- **"Two Who Dared": Screening of New Movie.** More information to follow. Sunday, April 14, 7 - 8:30 PM

- **Half-day Meditation Retreat.** Teachers: Jerry Hartman & Adam Silcott, who are associated with the Insight Meditation Community of Washington. Saturday, April 27, 9 AM - 1 PM

### PREVIOUSLY ANNOUNCED. DON'T MISS THESE:

- **"Journey of the Universe: The Epic Story of Cosmic, Earth, and Human Transformation,"** the Rev. Dr. Carl Gregg. Tuesdays, January 15 - March 19, 7:00 - 8:30 PM. Childcare available through advanced arrangement with DRE Lora Powell-Haney.

- **Pathways to Membership**, an opportunity for exploration of membership and for learning some history of UU and of this congregation, presented by the Membership Committee. Sundays, April 28, May 5, May 12, 12:15 - 2:00 PM (3 sessions)

Please see UUCF Website for complete listing of current offerings for spring 2013 ([www.frederickuu.org](http://www.frederickuu.org)). You may also see full class/workshop descriptions in the "ASE Sign-up Notebook" at the Religious Education kiosk in the atrium. It is helpful to know if you are planning to attend. ASE Committee: Ann Foard, Nancy Hutchins, Penny McDougal. Your suggestions are encouraged: [enrichment@frederickuu.org](mailto:enrichment@frederickuu.org).

# PROGRAMS AT UUCF con't.



## EARTH-CENTERED SPIRITUALITY SERVICE

Each month we gather on the 3<sup>rd</sup> Sunday of the month to honor our 7<sup>th</sup> principle "respect for the interdependent web of all existence of which we are a part". We will gather in the chapel at **10 a.m. on March 17<sup>th</sup>** to share our connection with each other and the good green earth.

## Spring Equinox

Come celebrate the return of life and the growing season as we honor Ostara on Wednesday **March 20<sup>th</sup> at 7:30 p.m.** in the chapel. Bring drums, rattles, decorations for the altar and a snack for feasting after the ritual.

~~Cosette Blackmer<lafingfrog@gmail.com>



## AHA: ATHIESTS, HUMANISTS, AGNOSTICS

March 3, 10:00 a.m.  
March 17 10:00 a.m.

**NOTE:** AHA will meet **1st and 3rd Sundays in March** due to a conflict with a congregational discussion. The topic for the 1st Sunday will be "Burning Issues". The topic for the 3rd Sunday is to be announced.  
~~Phyllis Liddell <phyllis.elaine@comcast.net>

## LABYRINTH WALK

Full-moon labyrinth walk on **Wednesday, March 27, at 7:00 p.m.**  
Indoor Labyrinth.

For information on what to expect at a Labyrinth Walk please see

[http://www.frederickuu.org/worship/UUCF\\_Labyrinth](http://www.frederickuu.org/worship/UUCF_Labyrinth)



## SERVETUS SOCIETY: UU CHRISTIANS

Servetus Society: A Chapter of Unitarian Universalist Christians, "Freely Following Jesus."

[http://www.uuchristian.org/S\\_Who.html](http://www.uuchristian.org/S_Who.html)

Michael Servetus (1509-1553) was a Unitarian "Saint," martyred for opposing trinitarian Christianity. The UUCF Servetus Society meets on the first Sunday of each month at 10 a.m. in the Chapel for progressive Christian worship following the Christian liturgical year.

Join us Sunday **March 3 at 10 a.m.** for a liturgy commemorating the Christian season of Lent. Communion will be served. All are welcome.

~~Sea Raven <searaven57@comcast.net>



## UUCF BUDDHIST FELLOWSHIP

The UUCF Buddhist Group continues meeting the second and fourth Sundays at 10 a.m. in the chapel. We expect to spend several more sessions continuing our discussions based on *Mastering the Core Teachings of the Buddha* by Daniel Ingrahm, led by Rev. Carl Gregg. We will be discussing Part III in March. As a reminder, the book is available free on line:

<http://integrateddaniel.info/book>. We begin our sessions with a brief meditation. All are welcome. You do not need to have read the book or be already familiar with Buddhist teachings.

You might also like to know that there is an overall association of UU Buddhist groups. You can find them by searching for "UU Buddhist Fellowship." April 5 - 7, 2013, there will be a weekend retreat sponsored by this group at Pearlstone, a near-by retreat center. The guest teacher will be Tara Brach.

~~Nancy Hutchins <nhutchins471@comcast.net>

# FISCAL NOTES, LATE FEBRUARY, 2013

## Including projected Fiscal Year 2013–2014 Budget

For the month of January, income was again higher than expenses both for the month and for ending the calendar year of 2012. Here's a summary of how our General Fund stood as of January 31, 2013:

	<u>January</u>	<u>Yr To Date</u>	<u>% of Annual Budget</u>
Income:	\$ 21,398	\$233,779	62
Expenses:	\$ 20,681	\$190,442	52
Difference:	\$ 717	\$ 43,337	

Our pledge drive is moving into full speed. The goal set by the Stewardship Committee for this year's pledge drive was guided in part by a "straw budget" created by the Finance Committee earlier this year. All Committee chairs and staff with a budget line were asked to submit for the Fiscal Year (FY) 2013-14 budget, along with justifications of how they would use the funds. These were then added into a projected "ideal" or "straw" budget. Here's a summary of the projected expenses, compared to those in this year's budget:

<u>Expense Category</u>	<u>Current (FY '13)</u>	<u>Projected (FY '14)</u>
TOTAL FUNDRAISING EXPENSE	\$11,400	\$11,300
TOTAL EMPLOYEE / STAFF EXPENSE	\$176,650	\$179,906
TOTAL FACILITIES EXPENSE	\$140,747	\$196,200
TOTAL PROGRAM EXPENSE (RE, Fellowship, Worship, Committees, etc)	\$29,770	\$33,487
TOTAL ADMIN & OFFICE EXPENSE	\$12,625	\$18,625
Total Expenses	\$371,192	\$439,518

As you can see, the projected budget is significantly higher than current expenses. There are some increases in our staff expenses, such as bookkeeping help and increased child care, which are necessary to support the programs of our growing congregation (but we save compared to this year because there are no ministerial moving expenses). The large increase in facilities expenses includes painting the building, more help with mowing and grounds-keeping, and other necessary capital repairs and improvements. And our office overhead expenses are already rising.

Of course, the actual budget for next year will be determined by the actual income projected for our current pledge drive. If we fall short of our goal, it will be necessary to prioritize projected increases and make some perhaps painful cuts. It all depends upon you, the congregation, and meeting our pledge goal will depend upon both increased pledge amounts by current members as well as increasing numbers of pledges in our growing congregation.

Thank you all for your continuing support of UUCF which allows us to carry out our programs, pay the bills, and continue all our good works!

---Sandi Smith-Gill, [treasurer@frederickuu.org](mailto:treasurer@frederickuu.org)

# Exploring Vegetarianism

[The following is the first of three solicited articles on Vegetarianism, written by **Kathy Myers**. The monthly series will address health, environment and ethics.

This first article deals with **ethics** and speaks to our tendency to feel entitled because of "god-given" rights which have become habitual to our thinking. In truth, we may personally eschew some justifications for human behavior but embrace others. What makes the difference?]

## Food for Thought

Genesis 1:26 says, "Then God said, "Let us make man in our image, in our likeness, and let them rule over the fish of the sea and the birds of the air, over the livestock, over all the earth, and over all the creatures that move along the ground." This is the historic justification for mankind's assumption that we have the right to do as we wish with the earth, and with all the other living beings that share it with us. Many other major religions take a very different approach, such as Hinduism, Jainism, or Buddhism, which encourage sharing the earth with animals as other living beings worthy of respect. The monotheistic religions of Judaism, Christianity, and Islam accept eating animals, which they justify by saying, "God said we can." The Bible is full of stories of the children of Abraham historically justifying invading their neighbors, taking the women as concubines [sex slaves], the children as slaves, and killing the men, tribe after tribe, by saying "and god said..." (We look at that conduct today and see all kinds of human rights abuses.)

Another interesting religious historical assumption is that of the "Doctrine of Discovery." In a papal bull issued in 1452, Pope Nicholas directed King Alfonso to "capture, vanquish, and subdue the saracens, pagans, and other enemies of Christ," to "put them into perpetual slavery," and "to take all their possessions and property." This was the legal justification used by Columbus to seize the East Indies, and is the basis of the United States [current] policy toward the Native American Indian nations. "In 1823, the Christian Doctrine of Discovery was quietly adopted into U.S. law by the Supreme Court in the celebrated case, *Johnson v. McIntosh* (8 Wheat., 543). Writing for a unanimous court, Chief Justice John Marshall observed that Christian European nations had assumed "ultimate dominion" over the lands of America during the Age of Discovery, and that—upon "discovery"—the Indians had lost "their rights to complete sovereignty, as independent nations," and only retained a right of "occupancy" in their lands.

In other words, Indians nations were subject to the ultimate authority of the first nation of Christendom to claim possession of a given region of Indian lands.

Why do we eat meat? Mostly because we were raised by our parents to. It is a habit. We *assume* it OK because it is "an inconvenient truth" to think animals have the same right to life that we do.

Kathy Myers



## SEAFOOD WATCH

Did you know your seafood choices matter?

Around the world, the demand for seafood is growing. Due to advances in technology, many kinds of fish we enjoy eating are now severely overfished. In the U.S. we import over 80% of our seafood. Destructive fishing and fish farming practices, as shown in the documentary, "End of the Line," add to the problem.

By purchasing fish caught or farmed using environmentally friendly practices, you can help support healthy, abundant oceans.

Best choices include seafood free of concerns about contaminants such as mercury. Some of these are: Salmon (Alaska wild) and tilapia (U.S. farmed).

Seafood to avoid include shrimp (imported) and tuna (all canned.)

For lots more information, please visit [seafoodwatch.org](http://seafoodwatch.org) and [www.edf.org/seafoodhealth](http://www.edf.org/seafoodhealth).

~~Monica Greene <[monica.greene@yahoo.com](mailto:monica.greene@yahoo.com)>



Welcome to news from the Social and Environmental Justice Committee (SEJC)!

## JUSTice + ACTION = JustAct

<http://uusocialjustice.org>

### SOCIAL JUSTICE INITIATIVE SURVEY COMPLETED — NOW WHAT?

Sixty members/friends of UUCF completed a Social Justice Initiative that asked you to choose a topic most everyone will feel enthusiastic about working on. Many thanks to everyone who gave us their opinion, either by Survey Monkey or hard copy. How do we act on those results? Five of us met to review survey results and develop a plan.

- Much discussion led us to two broad topics: (1) **Climate Change & Environmental Action** and (2) **Strengthening & Supporting Families**.
- At their March 19<sup>th</sup> meeting, the SEJC will choose one of the above two topics.
- Brian McCann and Dick Roblin will form a team to flesh out the topic of choice and develop a process for presenting it to the UUCF congregation.

At that point, we will move on to Step #2 of the Initiative. As FYI, here are the steps in the process the Board of Trustees approved last spring:

**Social & Environmental Justice Committee (SEJC) select an issue related to our UU principles.**

**Congregational discussion and evaluation of issue during 6-month period.**

**UUCF members submit individual written proposals to address chosen issue; several proposals can be combined into a final proposal.**

**Members of congregation vote on final proposal at special congregational meeting.**

**Issue accepted if it receives positive vote by 75% of members at meeting.**

**All voting members are expected to participate in implementing issue unless they notify Secretary of Board of Trustees of their opposition.**



## BOOK DRIVE Donate to B.I.G. (Books for International Goodwill)

Do you love books? Most of us do and chances are you need to clean your shelves so you can buy more. Add your lovingly used books to the box in the atrium **by March 17**. Especially needed: College, high school and elementary textbooks, and general reading for libraries. They will be donated to Books for International Goodwill (B.I.G.; <http://www.big-books.org>), which has sent 5.6 million books to schools and libraries in developing communities that submit a request. Those not suitable to send will be sold at the next BIG book sale.

Begun by the Parole Rotary Club of Annapolis and now an independent non-profit entity, its motto is "Spreading Literacy by Keeping Books Alive."

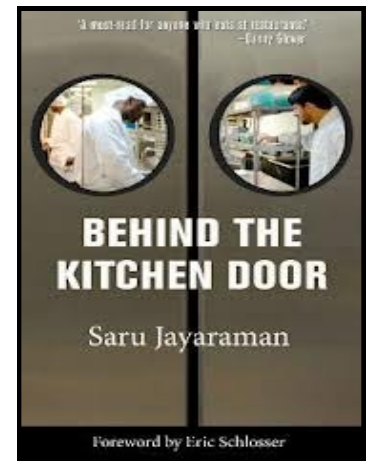
### VOLUNTEER FOUND FOR DELIVERY TO FOOD BANK

Drum roll and round of applause, please. Joanne Spivey has volunteered to deliver UUCF donations to the Food Bank until next December. Many thanks, Joanne!

Special thanks to John and Meg who delivered UUCF contributions for the past six months.

### JUSTICE FOR RESTAURANT WORKERS

Our Service Committee (UUSC) <http://www.uusc.org> works closely with Restaurant Opportunities Centers United (ROC-United). Codirector and cofounder Saru Jayaraman has written *Behind the Kitchen Door: What Every Diner Should Know About the People Who Feed Us*. The publication of this book provides a unique opportunity for UUs to discuss restaurant worker conditions. Book groups in UU congregations around the country are encouraged to read and discuss *Behind the Kitchen Door*. The long-term plan is to pass federal legislation that increases the minimum wage for tipped workers, who are often paid as little as \$2.13 per hour, a wage not



### Social and Environmental Justice Website

### Keep Abreast of News

Check <http://uusocialjustice.org>

for updated social justice information. Better yet, subscribe to our feed and get new posts delivered to your e-mail box.

# Social and Environmental Justice—Con't.

## Update from Able and Willing

Two pieces of Able and Willing news may be of interest to you – about Puma's motorcycle accident and about an upcoming recycling & document shredding fundraiser.

We have been looking forward to Puma's return from Congo later this month, but have unfortunate news that has impacted that schedule. On February 7, Puma was injured in a motorcycle accident and remains hospitalized. He sustained a concussion and broken shoulder blade. Communication to D.R. Congo has been very difficult but we are now in touch with Puma and his son Kabulo in Congo. We understand that the effects of the concussion are improving daily, and he is receiving excellent care. I talked with him today and he said he had an operation yesterday to repair his shoulder blade with pins and wire. Details remain unclear, although it seems certain he will not be well enough to return to the US until April. We will be updating you as we receive more information, but ask you that you keep him in your thoughts and prayers.

In other news, if you are in the Frederick, Maryland area, please mark your calendars for March 30, from 9 am until noon - our next fundraiser will be an electronics recycling and document shredding event at the Jefferson Ruritan Center. So save your confidential documents and unwanted electronic items for this fundraiser with a novel twist to enable students in our Congo schools to build specially designed computers at low cost.

We will soon send a progress report on our work in Mali and Congo and more information about upcoming events.

Thanks, as always, for your continued support.

Jim Carpenter and board members of AWIEF  
<http://AbleAndWilling.org>, 301-514-1356



## PROJECT BONA FIDE IS SPLIT-PLATE RECIPIENT FOR MARCH 17

UUCF knows Fredericktonian Michael Judd from his presentation last March in which he introduced us to what he calls edible landscaping ([ecologiadesign.com](http://ecologiadesign.com)) with a permaculture twist. Michael also spends part of the year in Nicaragua, where he founded and is co-director of Project Bona Fide, a non-profit that supports rural farming communities as they work toward self-empowerment and economic stability. Farmers are given financial and technical support toward gaining organic certification, establishing fair trade market opportunities, preserving natural environments, and working with local health and nutrition projects. This work is carried out at Finca Bona Fide, a 43-acre educational farm developed as a research/training center for regenerative agriculture and land management. We hope to have Michael for another presentation soon. In the meantime, please give generously to help his work with Project Bona Fide.

## UNITARIAN UNIVERSALIST UNITED NATIONS OFFICE



The UU - United Nations Office offers you the opportunity to put your Unitarian Universalist principles into practice. One way you can get involved is to participate in the Intergenerational Spring Seminar.

Every April, youth and adults from around the U.S. and Canada gather in New York City for an exciting and educational three-day seminar. They learn about international issues in depth and develop plans for action.

The seminar this year will be "SEX, LOVE, and VIOLENCE: Sexual Orientation and Gender Identity in a Globalized World." Youth will arrive the evening of April 3rd, and the seminar will take place April 4th - 6th. UU - UNO Envoys Monica Greene and Ben Gaffigan welcome other members of our congregation to join them at this powerful intergenerational gathering.

Registration is open until March 15. Please see [www.uua.org/unspringseminar](http://www.uua.org/unspringseminar).

In peace,

Monica Greene  
UU-UNO Envoy for UU Congregation of Frederick



# Upcoming Congregational Events

## Unitarian Universalist Congregation of Frederick Statement on Gun Violence

[frederickuu.org](http://frederickuu.org)

DRAFT 2/7/2013 at 8:00 p.m.

PROPOSAL

PROPOSAL

Thousands of Americans die each year through gun violence, including murder, suicide, or accidents, through mass killings and in individual incidents. Many of these deaths are of children. The time has come to address this carnage that continues every day in our country.

Our Unitarian Universalist Principles call us to “compassion in human relations” and one Source from which Unitarian Universalism draws is the “Words and deeds of prophetic women and men which challenge us to confront powers and structures of evil with justice, compassion, and the transforming power of love.” To live out these values, we, the Unitarian Universalist Congregation of Frederick, support reasonable limits on gun ownership and use that will serve to reduce the number of gun-related deaths in the United States. Reasonable limitations include, but are not limited to, the following:

- Require universal background checks for all gun purchases,
- Strengthen the laws respecting “straw purchases” of guns,
- Ban military-style assault weapons and high-capacity ammunition magazines,
- Support micro-stamping technology to make comprehensive ballistic identification a reality,
- Make gun trafficking a federal crime,
- Improve access to mental health services, and
- Increase funding for research related to ending gun violence.

Our Unitarian Universalist Principles also recognize “The right of conscience and the use of the democratic process within our congregations and in society at large,” and we recognize that reasonable people may disagree with this statement and seek alternative methods of reducing gun violence.

## CONGREGATIONAL DISCUSSION OF PROPOSED STATEMENT

MARCH 10, 12:15 P.M.



*Jill and Steve Schatken at the Gun Control March in Washington. Steve holds the name of one of those, out of tens of thousands, killed by gun violence.*

Comment on the Statement in the following ways:

- Attend the Discussion
- E-mail <[schatken@frontier.net](mailto:schatken@frontier.net)>
- Join the UUCF On-line Discussion Forum:

<http://frederickuu.org/phpbb2/viewforum.php?f=12>

## March BIRTHDAYS



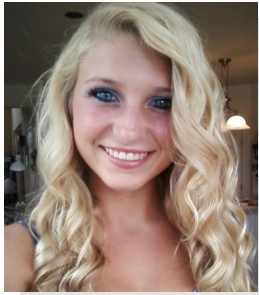
3<sup>rd</sup> – Phillip Kolb; 5<sup>th</sup> – Laurel Ady; 6<sup>th</sup> – David Hutchins; 8<sup>th</sup> – Jasmine Whims; 11<sup>th</sup> – Marvelle Rau, Kathy Sargent, Peter Singley; 12<sup>th</sup> – Rick Mead; 15<sup>th</sup> – Hannah Klipp; 18<sup>th</sup> – Michael Askounes; 20<sup>th</sup> – Elaine Lynch; 21<sup>st</sup> – Gary Hays; 23<sup>rd</sup> – Karen Butler, Lila Grace; 24<sup>th</sup> – Megan John; 27<sup>th</sup> – Jim Bryant, Alexa Gleaton, Nadia Remaley, Ed Sorensen; 28<sup>th</sup> – Patricia Spicer; and 29<sup>th</sup> – Sam Norris.

# BLANCHE AMES GALLERY PRESENTS

## *Sam+ Friends*

Aspiring artist Sam Norris, a long-time member of our Youth Group, headlines our yearly show featuring the best and brightest of our highly talented and in some cases semi-professional young UUCF artists.

Sam has invited friend Kateyn Millison to join our show. Katelyn is also an aspiring young artist who has shown in art galleries, submitted to auctions, and accepted commissioned work.



Acrylic by Katelyn Millison



"The Eye," a pastel  
by Sam Norris

Come to the show and see more work from all our exceptional artists. You will be amazed.

The reception is on **March 3 from 12:30 to 2:00 p.m.** Gallery hours vary; please call 301-473-7680 to assure that the building is open.

## BOARD HIGHLIGHTS February, 2012

### **Policy for Reserve Funds:**

The finance committee presented the Policy for Reserve Funds. This policy states the purpose of the reserve funds and how they are accrued. It also stipulates the requirements for use and monitoring of these funds. The board voted to approve the policy.

### **Stained Glass Panel Donation:**

The board voted to approve the contribution of two 30" glass panels generously donated by one of our families. The Visual Arts committee has located a suitable place to display the panels. They are valued at \$500.

### **Delegation Policy:**

The board voted to approve the Delegation Policy. This policy clarifies the specific roles of the board and the minister allowing for more efficient use of the time and energy of both.

### **Ministerial Evaluation:**

Reverend Gregg's contract calls for an evaluation by the board to be completed by April. The board reviewed and approved of the form and procedures for evaluation.

### **Access to Policy Manual:**

A hard copy of the policy manual is available to all in the office. There is also a version of the policy manual posted on our website but it is outdated. We are working to update the version that is currently posted.

All of the board minutes, reports and policies are also available in the office for your review.

~Cosette Blackmer<lafingfrog@gmail.com>

Voices raised for Justice


Nighttime Fun and Revelry

Amazing UU Shopping Section

Books and Materials Available

Making New Friends

UU Heaven



UNITARIAN UNIVERSALIST ASSOCIATION OF CONGREGATIONS

Louisville, KY  
JUNE 19-23

**GENERAL ASSEMBLY 2013**

<http://www.uua.org/ga/>  
For all your GA information

**It's close! Let's Go!**

Fabulous Music

New Ideas

Tiring

Inspiring

Seeing a New Town

Thrilling and Outstanding

Workshops that Help my Projects!

## Deadlines near for GA financial aid, certification

This is the year to attend the Unitarian Universalist Association General Assembly and become part of the larger UU community. GA will be held June 19- 23 in Louisville, KY.

The number of members a congregation certifies by February 1 is used to calculate number of voting delegates we will have. UUCF certified 187 members. *Note:* Our present number of members (i.e., those who have signed the membership book) is 202.

If you would like to attend and need some help with costs, the following deadlines apply:

**March 31:** The deadline for the GA Planning Committee's Matching Grant Program and the Youth and Young Adult Scholarship Program. The GAPC will pay registration costs plus up to \$250 (if matched by a congregation) to send a delegate to GA. Priority is given to congregational leaders, delegates from new congregations, and congregations that have not recently sent delegates. Grants for youth and young adults will pay registration plus up to \$500. Applications will be available March 1.

**March 31:** Applications to be volunteers at GA are due. Adult volunteers are required to work 24 hours over GA. Youth and those who qualify for reduced registration rates are required to work 14 hours. Online applications will be available March 1.

**April 30:** Applications are due to the UUA's Stewardship and Development group for scholarships from the Davidoff Fund, which subsidizes the attendance at GA of lay leaders who have not been to GA in the past three years.

[The Guide for the Frugal Attendee](#) provides other ways to attend GA as inexpensively as possible.

<http://www.uua.org/ga/registration/financialaid/15012.shtml>

**More GA info. in April Unison. Let's go to GA!**

### Jesus Seminar



### On The Road

Join Servetus Society and others at St. Mark's on Capitol Hill  
Washington, D.C.

Friday & Saturday April 5-6, 2013

#### *Jesus and Politics in His Time and Ours*

Friday evening lecture and Saturday seminars

JSOR seminars are sponsored by the Westar Institute, Home of the Jesus Seminar and the Seminar on Early Christianity. This is a chance to learn what progressive Christian Scholarship is all about.

For more information, contact Sea Raven, <[searaven57@comcast.net](mailto:searaven57@comcast.net)>

# March 2013

Sunday	Monday	Tuesday	Wednesday	Thursday	Friday	Saturday
<p><b>** This calendar is not all-inclusive of UUCF's building use. Please go to <a href="http://www.Frederickuu.org">www.Frederickuu.org</a> for a complete schedule.</b></p>					<p><b>1</b> 1p.m. 10th Anniversary of Building Dedication Planning Meeting</p>	<p><b>2</b> 1p.m. Meditation Workshop with Bhante Sujatha</p>
<p><b>3</b> 10a.m. Friendly Forum (213) 10a.m. Christian Service (Chapel) 11a.m. <b>Worship Service</b> 12:15p.m. AHA Group Discussion 12:30p.m. Artist Reception</p>	<p><b>4</b> 7p.m. Facilities Management Committee Meeting</p>	<p><b>5</b> 12:30p.m. Visual Arts Committee Meeting 7p.m. Tai Chi Class 7p.m. "Journey of the Universe" Class</p>	<p><b>6</b></p>	<p><b>7</b> 10a.m. Communications Team 7p.m. Programs Council Meeting</p>	<p><b>8</b></p>	<p><b>9</b> <b>FELLOWSHIP DINNER</b> (Sponsored by Stewardship)</p>
<p><b>10</b> 10a.m. Friendly Forum (213) 10a.m. Buddhist Service (Chapel) 11a.m. <b>Worship Service</b> 12:15p.m. Congregation Discussion re. Gun Violence</p>	<p><b>11</b> 7:30 Finance Committee Meeting</p>	<p><b>12</b> 10a.m. Chalice Community Group 7p.m. Tai Chi Class 7p.m. "Journey of the Universe" Class</p>	<p><b>13</b> 10a.m. Chalice Community Group 7 p.m. Worship Associates Meeting 7p.m. Chalice Community Group 7:30p.m. UUCF Choir Rehearsal</p>	<p><b>14</b> 10a.m. Chalice Community Group</p>	<p><b>15</b></p>	<p><b>16</b></p>
<p><b>17</b> 9a.m. Membership Committee 10a.m. Friendly Forum (213) 10a.m. Earth Centered Service (Chapel) 11a.m. <b>Worship Service</b> 12:15p.m. AHA Group Discussion 12:30p.m. Pastoral Care Meeting</p>	<p><b>18</b></p>	<p><b>19</b> 1p.m. Social and Environmental Justice Committee Meeting 7p.m. Tai Chi Class 7p.m. "Journey of The Universe" Class</p>	<p><b>20</b></p>	<p><b>21</b> 7p.m. Board of Trustees Meeting</p>	<p><b>22</b></p>	<p><b>23</b></p>
<p><b>24</b> 10a.m. Friendly Forum (213) 10a.m. Buddhist Service (Chapel) 11a.m. <b>Worship Service</b> 12:15 p.m. AHA Group Discussion</p>	<p><b>25</b></p>	<p><b>26</b> 10a.m. Chalice Community Group 7p.m. Tai Chi Class 7p.m. "Journey of the Universe" Class</p>	<p><b>27</b> 10a.m. Chalice Community Group 7 p.m. Worship Associates Meeting 7p.m. Chalice Community Group 7p.m. Committee on Ministry 7p.m. Full Moon Labyrinth Walk, 7:30p.m. UUCF Choir Rehearsal</p>	<p><b>28</b> 10a.m. Chalice Community Group 7p.m. Music Team Meeting</p>	<p><b>29</b></p>	<p><b>30</b> 10a.m. Quarterly Water System Maintenance (no water use in building during this period) 7p.m. YRUU Movie Night</p>
<p><b>31</b> 10a.m. Friendly Forum (213) 11a.m. <b>Worship Service</b></p>						

## Notes & News

The UUCF **book club** will meet on Friday, March 22, at 7:30 p.m. at the home of Kathleen and Zakir Bengali. The book we will be discussing is *Wolf Hall* by Hilary Mantel. This is book one of her Thomas Cromwell Trilogy. We are looking for some new members to join us. We always have a lively discussion and the host indulges us with delicious refreshments. If you would like to join us but aren't sure how to get to the Bengali home you can contact them for directions by calling [301-874-2519](tel:301-874-2519) or e-mailing them at [Kathleen\\_bengali@comcast.net](mailto:Kathleen_bengali@comcast.net).

Not only does **RUUMEO** offer an opportunity for Retired UU Men to Eat Out, but they can do so without having to join anything, pay dues, wear funny hats, or learn a secret handshake. Just meet for breakfast (c.8 a.m.) at Mimi's Cafe, 5120 Buckeystown Pike, on the first and third Wednesdays of the month. So put RUUMEO down on your calendar for **March 6 and 20**.

As an incentive, the friendly gift card sellers in the atrium after Sunday services have Mimi's cards, part of the purchase price going to UUCF!

**Chronologically Gifted** will NOT meet this month due to the Congregation's Annual Dinner planned for that night. We'll meet on the second Saturday of April. That will be April 13. We'll see you at the dinner on March 9. Call Marj Mansfield for more info at 301-693-6195 or call 301-473-8246 for more information.

Thank you all for your generous nonperishable, **food donations!** Friday I delivered 8 large bags of food to the Thurmont food bank. I'm sure the community welcomes our hearty generosity. The Thurmont food bank is located at St. Johns, 15 N. Church St in Thurmont. It is open Tuesdays, 6-7:30 and Fridays, 3:30-5 p.m. Thanks again for your year-round donations! -- Joanne Spivey

**Worth watching:** PBS special **Makers: Women Who Make America**. Originally aired 2/26, but it is well worth checking to see about repeats and on demand viewing. All the major protagonists and antagonists surrounding the continuing struggle for equal rights in America are seen and heard from. Revealing film footage is screened.

### Need a Helping Hand?

Within our church community many of us lend a hand when we see a need. The care that is given may only be known by the giver and the receiver and that is what our church community is all about, but within the church there is also an established group, **The Pastoral Care Team**, that is ready to help. The Pastoral Care Team, part of the lay church ministry, provides a caring presence and confidential support for members and friends who are facing illness, a birth, surgery, or a crisis. When possible, help is provided in the form of hospital, home, and/or phone visits, transportation to doctors' offices and coordination of meals through the Food for Friends program. The Pastoral Care Team is not able to provide medical, nursing, or therapy services; however, appropriate referrals to agencies are offered as needed.

Help may be requested by contacting a member of the Pastoral Care Team. To request a meal(s), contact coordinator Dorothea Mordan.

Contact information for the current members is listed below.

**The Unitarian Universalist Congregation of Frederick, MD**  
**4880 Elmer Derr Road**  
**301-473-7680**  
**[www.frederickuu.org](http://www.frederickuu.org)**

## Board of Trustees

**President**, Karen Russell <[board@frederickuu.org](mailto:board@frederickuu.org)>  
**Vice-President**, Carl Kruhm <[carlkruhm@comcast.net](mailto:carlkruhm@comcast.net)>  
**Secretary**, Cosette Blackmer <[lafingfrog@gmail.com](mailto:lafingfrog@gmail.com)>  
**Treasurer**, Sandi Smith-Gill <[sandrasmithgill@aol.com](mailto:sandrasmithgill@aol.com)>  
**Assistant Treas.** (non-voting), Sue Thomson <[inforntst@verizon.net](mailto:inforntst@verizon.net)>

Brad Calhoun, <[bradcalhoun@comcast.net](mailto:bradcalhoun@comcast.net)>  
Mark Gleaton <[markgleaton@comcast.net](mailto:markgleaton@comcast.net)>  
Roy Greene <[roy.greene@yahoo.com](mailto:roy.greene@yahoo.com)>  
Mike Morse <[mike.morse@comcast.net](mailto:mike.morse@comcast.net)>  
Steve Schatken <[schatken@frontiernet.net](mailto:schatken@frontiernet.net)>

## Pastoral Care Associates

Laura Cornwell, <[utopiated1@gmail.com](mailto:utopiated1@gmail.com)>  
Julie Ebersole, <[julie.ebersole@gmail.com](mailto:julie.ebersole@gmail.com)>  
Hannah Gaffigan, <[hmgaffigan@msn.com](mailto:hmgaffigan@msn.com)>  
Fanny Johnsson, <[fjohnsson@comcast.net](mailto:fjohnsson@comcast.net)>  
Diane Shuey, <[dbshuey@gmail.com](mailto:dbshuey@gmail.com)>  
Jill Schatken, <[schatken@frontiernet.net](mailto:schatken@frontiernet.net)>  
**Foods for Friends**, Dorothea Mordan, <[mordanmailbox@gmail.com](mailto:mordanmailbox@gmail.com)>, 443-980-9363

## Minister and Staff

**Minister**, The Rev. Dr. Carl Gregg <[minister@frederickuu.org](mailto:minister@frederickuu.org)>  
**Religious Education**, Director Lora Powell-Haney <[education@frederickuu.org](mailto:education@frederickuu.org)>  
**Congregational Administer**, Dottie Hall (301-473-7680) <[office@frederickuu.org](mailto:office@frederickuu.org)>

## Administrative Volunteers

**Information Technology**, Turner Stokes <[infotech@frederickuu.org](mailto:infotech@frederickuu.org)>  
**Unison Editor**, Tibby Middleton <[midken@comcast.net](mailto:midken@comcast.net)>  
Assistant, Barbara Kenny; Proofreader Mary Kruhm  
**Publicity/Marketing**, Irene Jericho <[irene.jericho@gmail.com](mailto:irene.jericho@gmail.com)>  
**Webmaster**, Rick Holt <[webmaster@frederickuu.org](mailto:webmaster@frederickuu.org)>

## Publications

**Unison Deadline:** submissions by the 24th; web posting on the 28th  
**Mid-Week Announcements:** submissions by Wednesday, noon; e-mailed on Thursdays  
**Submission address:** <[announcements@frederickuu.org](mailto:announcements@frederickuu.org)>  
Indicate publication on the subject line.